



## Who Are You Hiring?

Does the delivery guy you just hired want to be the next Jeff Gordon...with your company car?

Background checks help prevent bad hires that can cost your business thousands in turnover, shrinkage, legal fees and brand damage. Invest your business's time and resources in committed candidates.

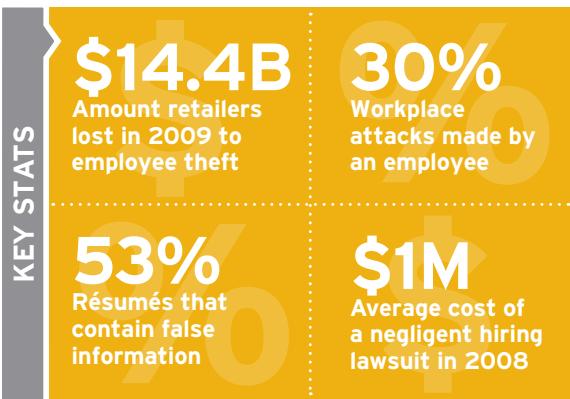
PeopleMatter HIRE™ weeds out questionable candidates before they're hired to help you:

- Improve applicant quality
- Increase retention
- Save money
- Reduce shrinkage
- Ensure compliance
- Build trust



MAD Greens-Inspired Eats

HIRE's background checks help you build a dependable, trustworthy team.



### HIRING PEACE-OF-MIND: PEOPLEMATTER HIRE™

Screen candidates quickly, easily and electronically with our online background check tool. HIRE helps you build a trustworthy team with comprehensive checks, including criminal, motor vehicle, education, employment and more. Questions are embedded in HIRE's online application for a seamless candidate experience. Electronic forms, pre-populated data and real-time reports make parting with paper processes easy for admins.

Stop risky hiring before it stops your business with HIRE.

### CUSTOMER SUCCESS: RICKER OIL COMPANY

Ricker Oil Company, an Indiana-based C-Store company, uses HIRE's screenings to help decrease time-to-hire, save money and identify the best candidates. "HIRE's background checks are much better than what we used previously," said Karen Mitchener, Director of Human Resources. "Managing everything—from the background checks to I-9s—in one system has been extremely beneficial."

“The speed and quality of information really improved our overall hiring process.”

Karen Mitchener



### COMPONENT FEATURES

**TIERED PACKAGES** Save money with Basic, Intermediate and Management options.

**24/7 ACCESS** Manage, track and view reports anytime, anywhere via the Web.

**INSTANT RESULTS** The answers you need...now. In a report you can actually understand.

**PLATFORM INTEGRATION** Increase ROI with technology that works together to work for you.

**INTUITIVE DESIGN** Simple from start-to-finish for both the employer and the candidate.

**ROLE-BASED ACTIVATION** Turn screenings on or off for specific positions.